

# NONPROFIT SERVICES



Stay focused on your mission.

**i** need expertise and support from professionals who understand the complexities of my organization.



Fulfilling your organization's mission amid constant changes and serious challenges requires help. You need professionals in your court with sharp thinking and sound ideas that come only from specialized expertise. Wipfli's nonprofit practice group of professionals work solely for the nonprofit sector, serving clients at the local, state, and federal levels.

We'll share best practices successfully used by the hundreds of clients and thousands of employees of nonprofit organizations. We'll help you stay in compliance and run the efficient organization your mission demands. We'll provide you with helpful resources for quick answers and timely information.

## Wipfli helps nonprofit organizations with:

- Audit and tax
- Strategic planning and vision
- Organizational development
- Risk management
- Succession planning
- Professional coaching
- Employee handbooks
- Compensation design and benchmarking
- Compliance reviews
- HR analysis and personnel selection
- Performance management
- Webinars and on-site training
- IT integration and software

FIERCELY FOCUSED >

**WIPFLI**<sub>LP</sub>  
CPAs and Consultants

# NONPROFIT SERVICES

## **i** need to work with people who understand the nonprofit industry and can help my organization face ever-changing challenges.

Our multidisciplinary approach to supporting nonprofit groups is the cornerstone of our mission to serve the nonprofit sector.

From urgent needs to long-term planning, we're here. Financial reporting and cost accounting systems. Financial statements and internal audits. Assurance services. Human resources and temporary personnel. Strategic alignment.

Grant-funded programs. Process improvement. Organizational development. Software development and technology integration. Risk management. And much more.

If you're struggling in managing any component of your organization, Wipfli has the training and tools to support you.

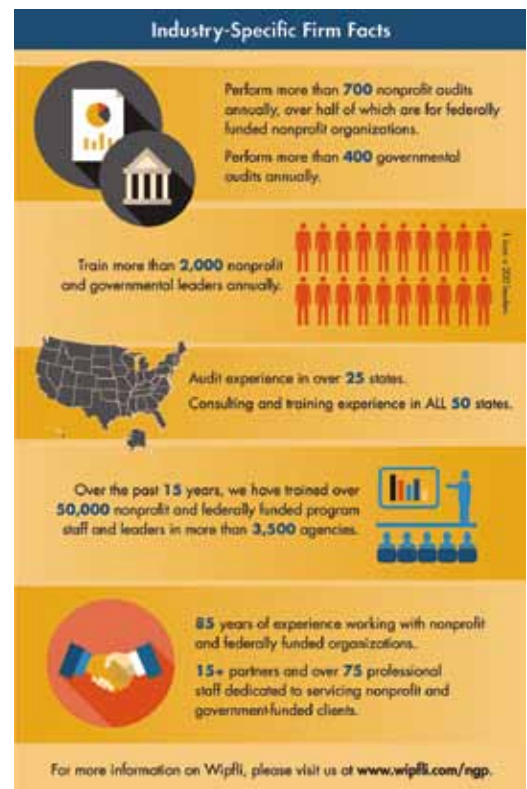
## **i** like to work with people who share our values and are genuinely passionate about our mission.

We want to help make a difference in your organization and help you achieve your mission. Wipfli employees stay deeply involved in community activities and serve on numerous boards. We understand your commitment to your mission because we share your passion for making a positive impact in the world.

## **i** need the security of knowing we're in compliance with the regulations that affect my organization.

Wipfli's on-site training, webinars, and conferences keep you up to date with relevant information you can implement immediately.

Our expertise spans federal regulations, program requirements (i.e., Head Start/Early Head Start), leadership and human resources, and financial and a variety of risk management areas.



Wipfli brings you accessible people with experience, passion, a sense of community, and a genuine interest in helping nonprofit organizations excel.