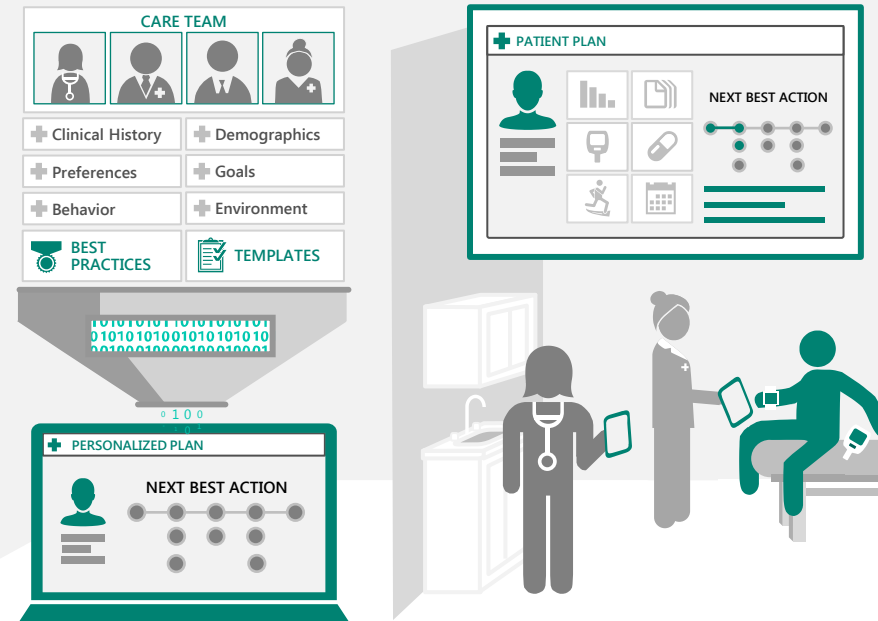


Care Coordination – individual patient experience

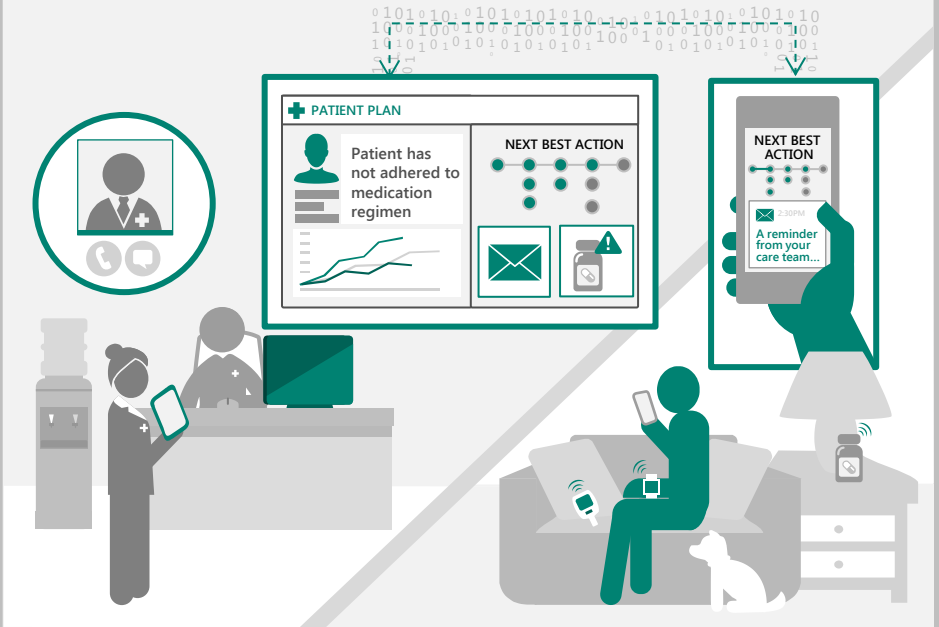
Onboard and segment



Enroll and personalize care plan



Monitor and coordinate care



Target at-risk segments of the population

- Identify health trends
- Reach out proactively to potential treatment candidates

Create personalized care experiences

- Create an individualized care plan
- Tailor care with a better understanding of your patients' needs

Manage care in a unified environment

- Share information across care teams
- Offer anytime, anywhere access
- Provide Next Best Actions to all parties

Provide holistic care

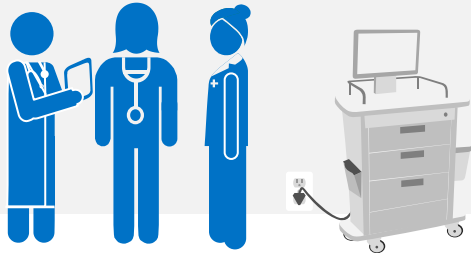
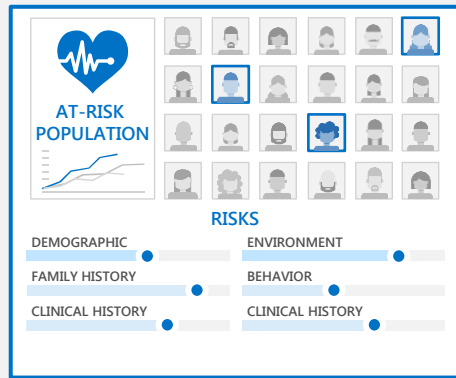
- Proactively engage with patients beyond clinical walls
- Empower patients to take charge of their health

Achieve value-based care goals

- Improve population health and individual experience through value-based care
- Reduce readmissions
- Lower costs

Care Coordination – population health management

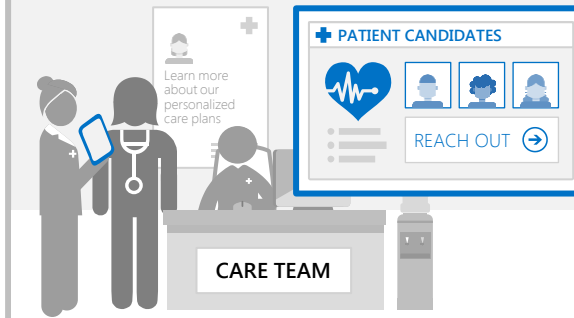
Segment



Identify at-risk segments of the population

- Collect data from care teams across the health network
- Identify internal and external factors influencing patient outcomes

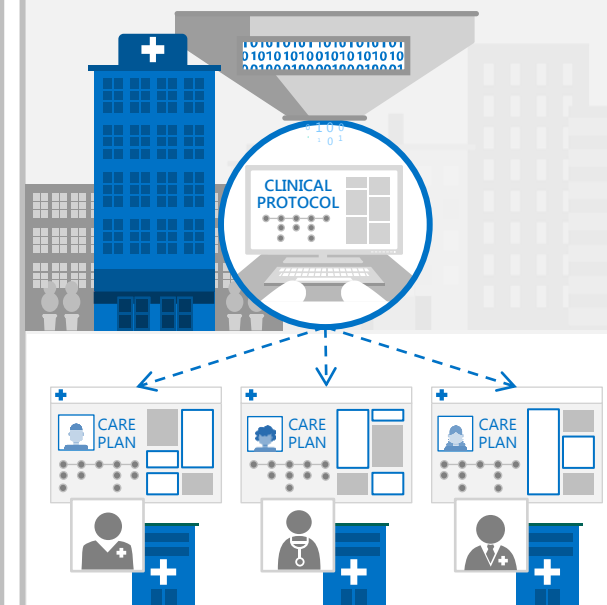
Target



Proactively engage with prospective patients

- Identify segments and target individuals to discuss options for personalized care
- Gain the ability to intervene earlier to improve outcomes

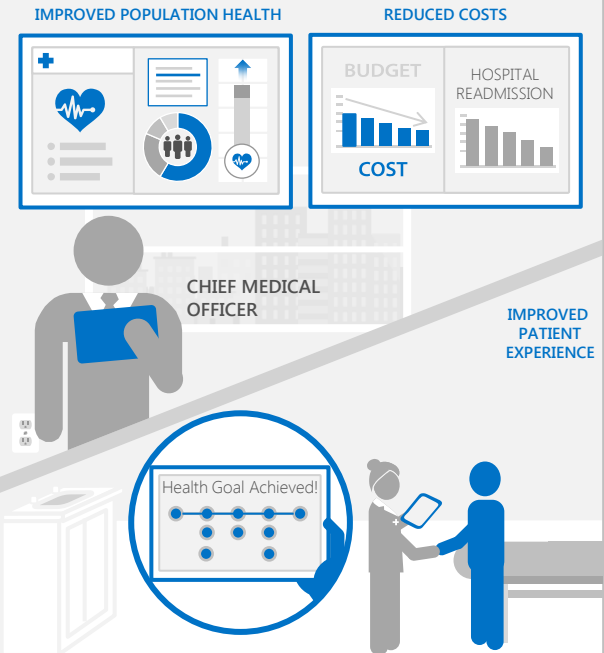
Treat



Optimize treatment plans

- Templatize and share best practices across care providers
- Create and fine-tune personalized care experiences

Improve outcomes



Achieve value-based care goals

- Improve individual experiences and overall population health
- Reduce readmissions
- Lower population health costs