



H U B S C I E N C E

THE KNOWLEDGE TERMINAL

hubscience.com



HUBSCIENCE

INTELLIGENT TEXT MINING PLATFORM FOR THE FAST AND ACCURATE PROCESSION OF LIFE SCIENCE LITERATURE

It has been a real challenge to integrate, extract and analyze knowledge locked within unstructured Life Science textual information. Increasing volumes and varieties and sources of information are adding to the problem. We believe it is time to start a new era of fast and accurate knowledge management.

HubScience offers a unique hybrid solution that integrates the advantages of manual curation with the automated semantic annotation procedure resulting an accurate and fast process that is capable to analyze big data pieces.

HubScience technology applies:

- **E-D-T-A – Extreme Deep Text Analysis**, which can be trained for any specific topic
- **Easy to Use Graphical Interface** for end users
- **Technology that can be easily integrated into any 3rd party systems**
- Unique platform offering the advantages of **teamwork**
- **Dual-layer semantic annotation** methodology including logical relations

E·D·T·A – EXTREME DEEP TEXT ANALYSIS TEXT MINING POWERED BY HUBSCIENCE TECHNOLOGY

E-D-T-A is our complex text processing technology which boosts the human literature reading and understanding processes by combining the power and accuracy of manual curation with the speed of machine learning-based text mining processes.



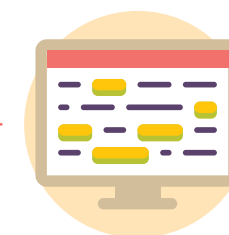
HubScience builds E-D-T-A for automated preannotation:

- Preannotation for Life Sciences texts (E-D-T-A built by HubScience professionals)
- Preannotation for user-specific topics (E-D-T-A built by users or HubScience professionals)

HUMAN OR AUTOMATIC PROCESSING?



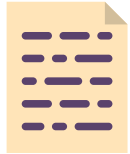
VS



- High costs of production
- Qualified experts hard to find
- Higher error rate, data of poor quality
- Time constraint

- Fast processing
- Accuracy is low on medical documents
- Shallow processing of abstracts

HUBSCIENCE FEATURES



ARTICLE

1

2

3

4

5

6

7

8

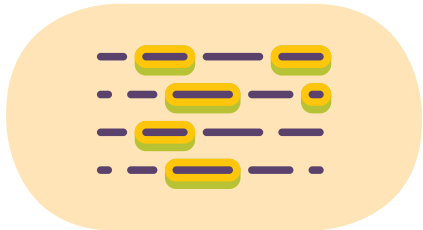
9

10

11

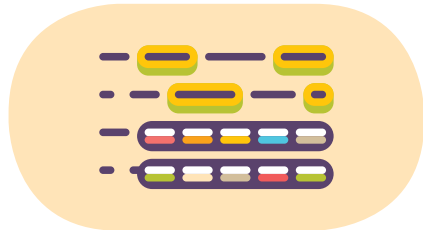
PREANNOTATION

Annotation is supported with automatic preannotation processing, when HubScience – E-D-T-A annotates the already known information.



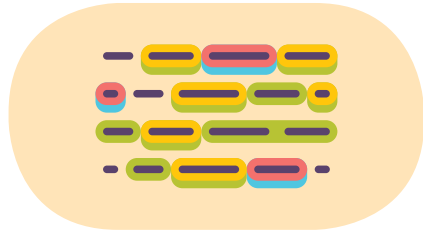
ANNOTATION INTERFACE

HubScience provides a graphical user interface for marking and editing annotation structures. During annotation ("content extraction") you can apply hierarchical labeling ("tagging") in publications by using multi-colored highlights.



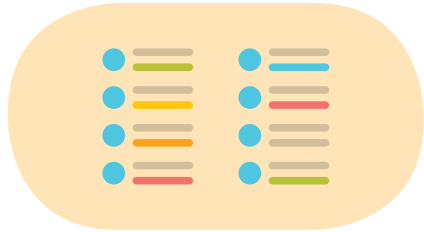
MANUAL AND ON-THE-FLY ANNOTATION

You can select any text segment and specify the type of the information before HubScience annotates and highlights the most confident fields.



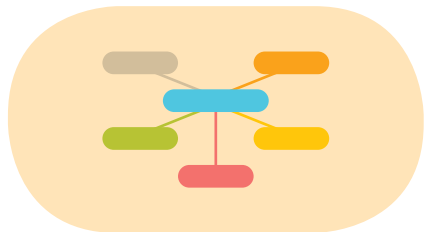
PERSONAL ANNOTATION CATEGORY

You can create your own two-level annotation categories to fit your special requirements and to mark text structures loaded with information (semantic annotations).



AUTO-EXTRACTION OF META AND AFFILIATION DATA

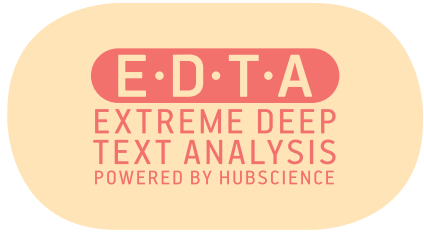
The detection and extraction of Metadata (data related to the publication of the document, keywords, abbreviations) and affiliation information (authors, institutes, address, relations and contact data) are also automated.



E·D·T·A EXTREME DEEP TEXT ANALYSIS POWERED BY HUBSCIENCE

E-D-T-A

Extreme Deep Text Analysis, is our complex text processing technology which boosts the human literature reading and understanding processes in the medical and biotechnological research.



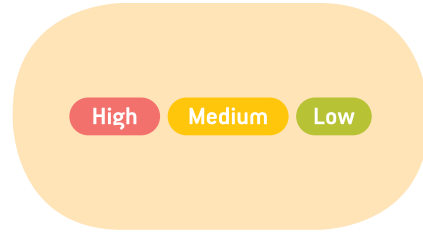
RATING

HubScience users are invited to rate any journal articles on a scale of 1 to 10. You can rank documents by relying on your own experience in evaluating scientific information.



TRACKING

Find and keep track of the most relevant scientific articles for your project. You can rank documents (High, Medium or Low) by relying on your own criteria such as how relevant they can be in a given topic.



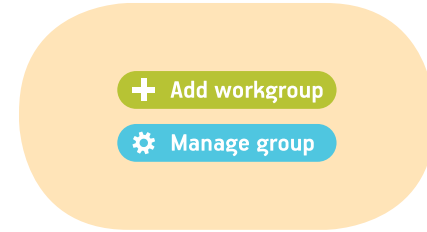
REMARK

You can add your own notes, comments or reminders directly to the annotated information or you can link web contents to it.



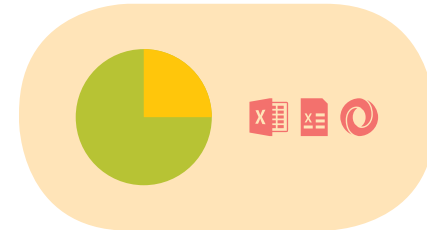
TEAMWORK

You can privately annotate, discuss and collaborate within your own groups and share knowledge securely. Share your research and literature survey tasks with invited researchers, colleagues and friends.



EXPORT AND STATISTICS

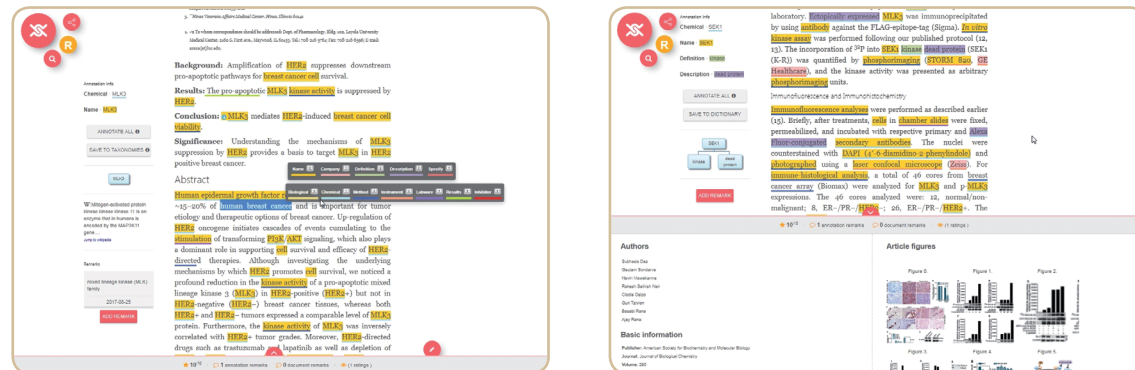
Export an unlimited number of your annotations and notes in any structured data formats (XLS, CSV, JSON).



CUSTOM TAILORED TEXT MINING SERVICES

HubScience offers custom solutions for any text mining related problem:

- Building **vocabularies, synonym dictionaries** for any selected topic by a team of HubScience professionals
- Constructing **ontologies** for any topics by the HubScience professional team
- **Training machine learning** algorithm – E-D-T-A – for the automated annotation of any topics
- **Extracting knowledge** from big data elements and structuring the information
- **Integrating** HubScience technology into any 3rd party software
- Providing **training** on text mining best practices
- **Complete walkthrough** the text mining process from implementation to production
- Continuous **technical and scientific** support on text mining processes



HubScience offers a complete package for knowledge management from the development of necessary toolkits to the implementation of the complete workflow supported by its professional data curator, developer and NLP team.

APPLICATIONS OF HUBSCIENCE TECHNOLOGY

At Libraries of Universities and Research Institutions

- Fast and easy comprehension of complex matters
- Supporting material for researchers and students to stay competitive

Pharmaceutical Industry

- Pharmaceutical sciences specific text mining services for knowledge management
- An easy to use software interface for individual researches to support discovery processes and decision making

Publishers

- Ready to use automated preannotation software enabling fast and accurate knowledge extraction from big data elements
- Topic specific artificial intelligence based custom services
- Flexible technology, easy to integrate in 3rd party software

Research Groups

- Fast and effective literature survey shared between team members enabled by machine learning
- Information tracking
- Personalized solutions

Data Curation

- Smart ontology builder considering specific areas / individual requirements
- Personalized annotation, higher accuracy
- User friendly platform to manually check auto-processed information
- Leveraging the power of teamwork



About HubScience

HubScience is an informatics solution and service provider company founded in 2015 by a team with over 12 years of experience in the development of commercial databases and innovative decision support solutions with primary focus on the pharmaceutical and biotechnology industry. HubScience offers a unique, hybrid human-machine text-mining solution supported by an artificial intelligence-based learning process.

What we are working on right now?

- Simple and innovative User Interface
- Batch document processing
- PDF processing
- Data visualization and analysis tool
- Dictionary editor
- Data encryption

Contact us

Office - Budapest
Apáczai Csere János utca 11.
Budapest 1051
Hungary
hello@hubscience.com
hubscience.com



HUBSCIENCE

